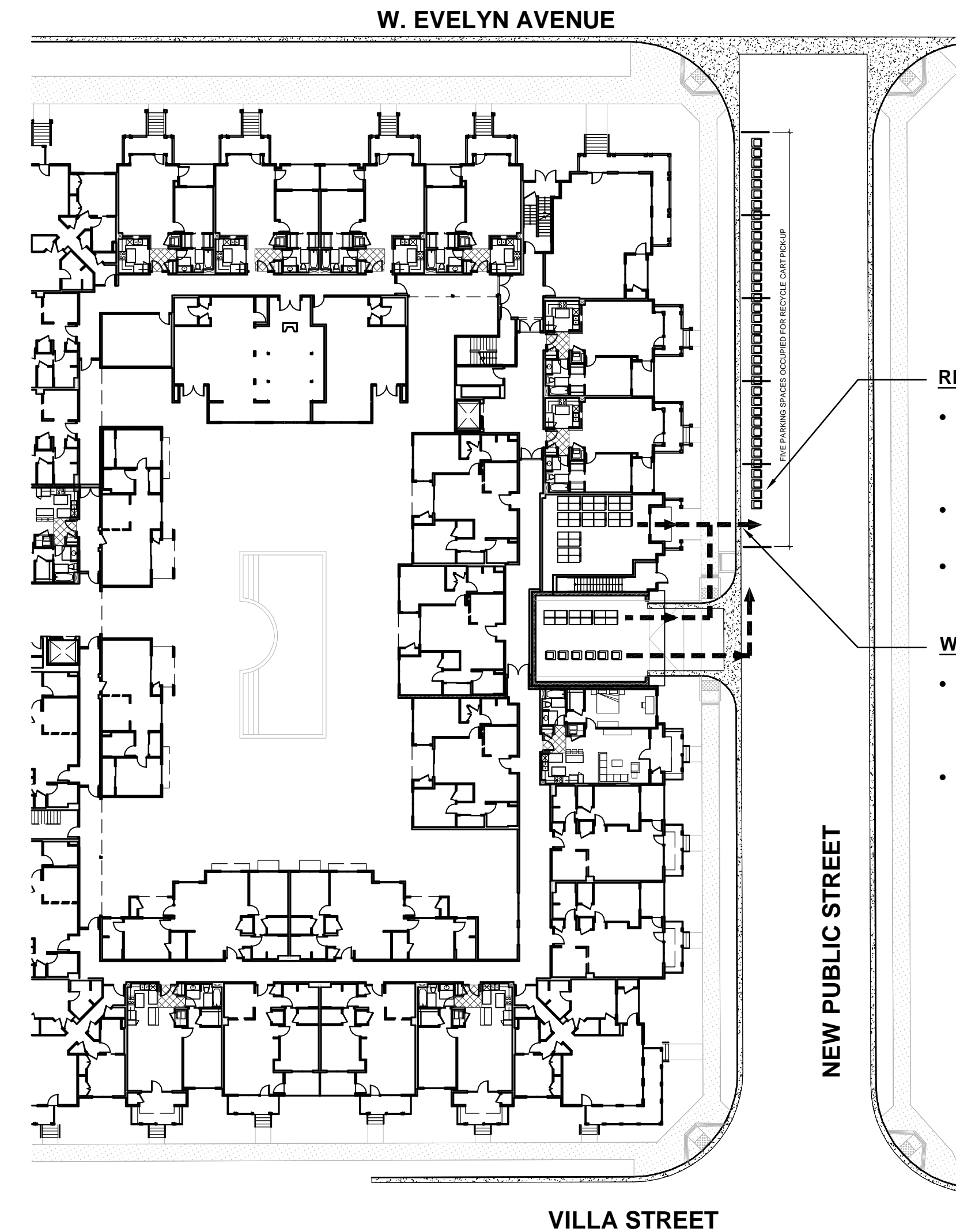


**PROJECT DATA - TRASH FACILITIES:**

1. QTY (4) TRASH COLLECTION ROOMS HAVE BEEN DESIGNED FOR THE ENTIRE PROJECT.
2. EACH ROOM IS EQUIPPED WITH THREE SEPERATE CHUTES TO RECEIVE MATERIALS FROM ABOVE: ONE FOR WASTE AND TWO FOR RECYCLING.
3. BI-WEEKLY WASTE PICK-UP REQUIRES QTY (8) BINS TO FILL AND STAGE OUTSIDE FOR COLLECTION AND QTY (4) BINS TO REMAIN AT CHUTES DURING COLLECTION.
4. RECYCLE PICK-UP OCCURS EVERY OTHER WEEK AND REQUIRES QTY (36) RECYCLE CANS TO FILL AND STAGE OUTSIDE FOR COLLECTION.
5. QTY (2) ADDITIONAL 3 CU.YD. BINS HAVE BEEN PROVIDED FOR CARDBOARD WASTE.
6. TOTAL RECEPTACLES FOR THE PROJECT:
  - 12 WASTE BINS @ 3 CU. YD.
  - 2 CARDBOARD BINS @ 3 CU.YD.
  - 36 RECYCLE CANS @ 96 GAL.
7. BLDG MAINTENANCE PERSONNEL ARE CHARGED WITH THE TASK OF STAGING ALL BINS AND CARTS ON DESIGNATED TRASH DAYS - SEE 2/A5.2 FOR ON GRADE STAGING LOCATIONS.

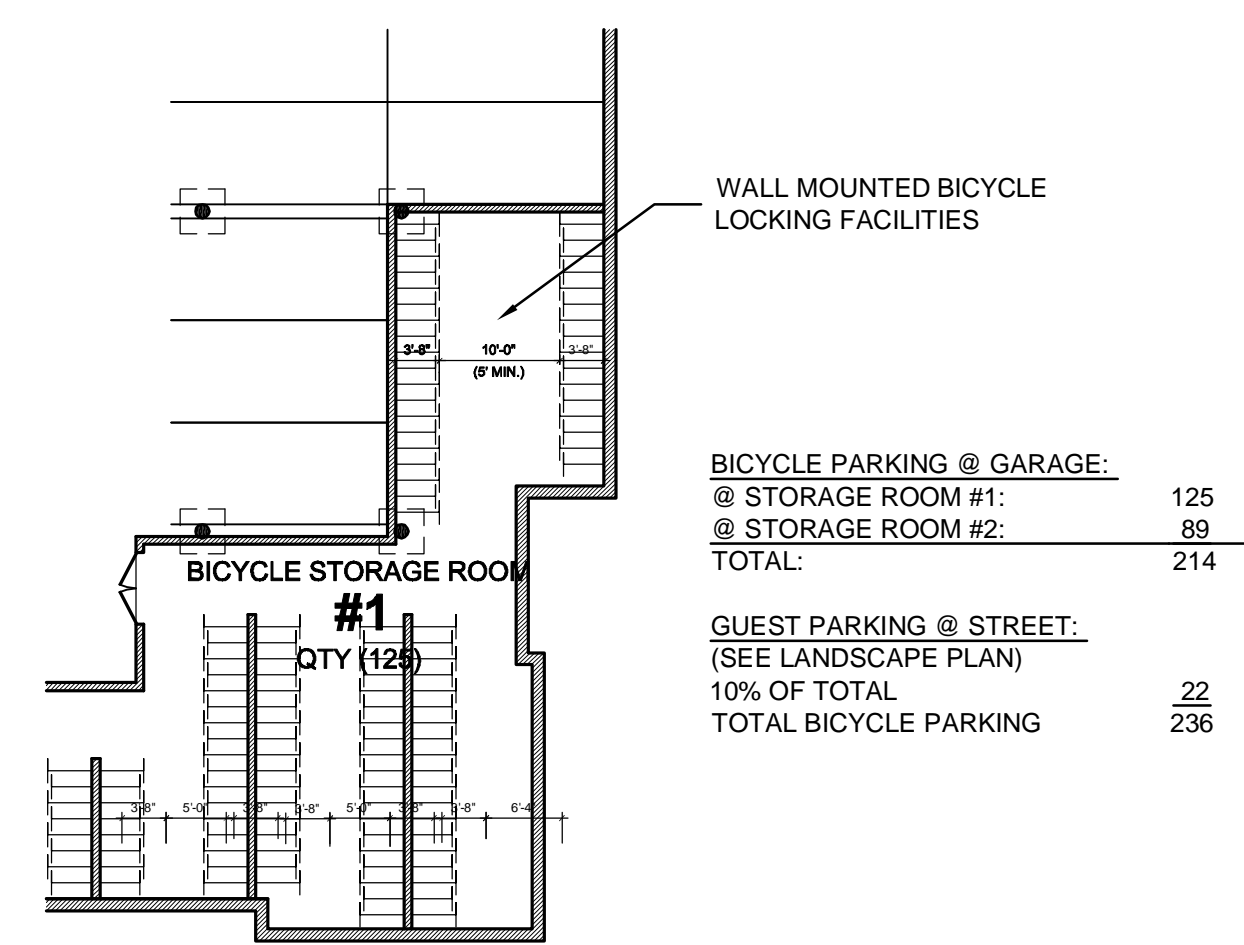


- RECYCLE CART STAGING:**
- AT-GRADE STAGING TO OCCUR AT DESIGNATED STREET PARKING FOR COLLECTION EVERY OTHER WEEK (QTY 36 CARTS).
  - INTERIM DRIVEWAY CONDITION : STAGING TO OCCUR ON NEW PUBLIC STREET.
  - ULTIMATE NEW PUBLIC STREET CONDITION : STAGING TO OCCUR ON NEW PUBLIC STREET.

- WASTE BIN STAGING ROOM:**
- AT-GRADE STORAGE / STAGING ROOM TO BE PROVIDED FOR WASTE COLLECTION PICK-UP TWICE PER WEEK (QTY 8 BINS).
  - FACILITY TO BE ACCESSED BY WASTE MANAGEMENT COMPANY ON DESIGNATED PICK-UP DAYS.

**1 TRASH ROUTE @ GARAGE**  
A5.2 1/32" = 1'-0"

**2 TRASH ROUTE @ GRADE**  
A5.2 1/32" = 1'-0"

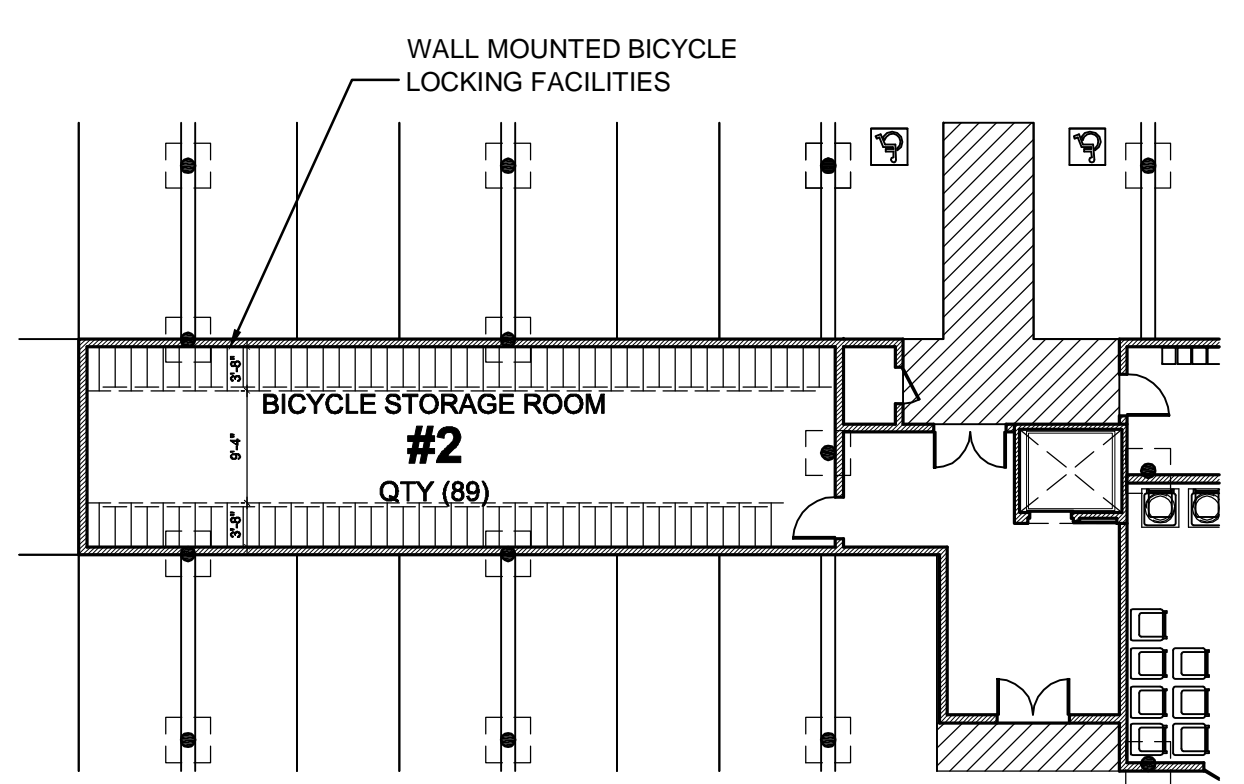


**BICYCLE PARKING @ GARAGE:**

@ STORAGE ROOM #1:	125
@ STORAGE ROOM #2:	89
<b>TOTAL:</b>	<b>214</b>

**GUEST PARKING @ STREET:**  
(SEE LANDSCAPE PLAN)  
10% OF TOTAL

	22
<b>TOTAL BICYCLE PARKING</b>	<b>236</b>



**3 BICYCLE PARKING @ GARAGE**  
A5.2 1/16" = 1'-0"

**455 WEST EVELYN AVENUE**  
MOUNTAIN VIEW, CALIFORNIA  
PROMETHEUS REAL ESTATE GROUP

Scale	Date
	11.10.2009
Sheet Title	
TRASH & BICYCLE EXHIBITS	